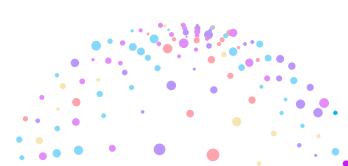


# 2021 KSMCB Schedule



## Wednesday, November 3, 2021

Time/Place	5F	3F			Hall	
	Tamna Hall	Halla Hall A	Halla Hall B	Samda Hall	Poster/Exhibition	
10:30 - 12:00	Registration					
12:00 - 14:10	Sym. 01 Pioneers in Cancer Research	Sym. 02 Cutting-edge Approaches to Tackle Molecular Neuroscience Questions: Focusing on Synapse Assembly	Sym. 03 Functional Diversity of RNAs in Disease and Development	Sym. 04 Dynamic Protein Traffic between Membrane Contact Sites	Exhibition (12:00 - 17:00)	
14:10 - 14:40	Break					
14:40 - 15:00	Opening Ceremony (Tamna Hall)					
15:00 - 15:50	PL1. Elaine Fuchs (Tamna Hall)					
15:50 - 16:20	Break					
16:20 - 16:50	Macrogen Scientist Award (Tamna Hall)					
16:50 - 17:20	Ilchun Memorial Lecture (Tamna Hall)					
17:20 - 17:50	KSMCB Award for Women in Life Science Lecture (Tamna Hall)					
17:50 - 19:00	Presidential Dinner					

## Thursday, November 4, 2021

Time/Place	5F Tamna Hall	Halla Hall A	3F Halla Hall B	Samda Hall	Hall Poster/Exhibition
08:00 - 09:10	Registration				
09:10 - 11:20	<b>Sym. 05</b> Autophagy Functions, Mechanisms, and Application	<b>Sym. 06</b> Neural Substrates of Social Behaviors	<b>Sym. 07</b> Plant-Microbe Interactions	<b>Sym. 08</b> Convergence and Crossover in Structural Biology <i>*KSMB</i>	
11:20 - 11:50	Break				
11:50 - 12:40	PL2. Ruslan Medzhitov (Tamna Hall)				Exhibition (09:10 - 18:00)
12:40 - 13:30	Company Workshop 1	Lee Se Yong Outstanding Ph.D. Thesis Awards	AMOREPACIFIC Great Global Next Generation Research Award Lectures	Global Network Session	
13:30 - 14:10	KOBIC Session				
14:10 - 15:20	Break & Poster Viewing				*Poster Presentation 1 (13:30 - 15:20)
15:20 - 17:30	<b>Sym. 09</b> Epigenetic Regulation in Basic and Clinical Approaches	<b>Sym. 10</b> Emerging Application of Stem Cells for Parkinson's Disease	<b>Sym. 11</b> Microbiome: Still Uncharted Territory for the Future	<b>Sym. 12</b> Young Scientist in Women's Bioscience Forum	
17:00 - 17:30	Break				
17:30 - 18:10	KSMCB Presidential Lecture Award				
18:10 - 19:10	PL3. Gou Young Koh (Tamna Hall)				
19:10 - 20:00	Welcome Reception				

## Friday, November 5, 2021

Time/Place	5F	3F			Hall
	Tamna Hall	Halla Hall A	Halla Hall B	Samda Hall	Poster/Exhibition
08:00 - 09:10	Registration				
09:10 - 11:20	<b>Sym. 13</b> Moving Forward in Response to the COVID-19 Pandemic	<b>Sym. 14</b> Plant Development and Signaling	<b>Sym. 15</b> Advanced Bioimaging Techniques	<b>Sym. 16</b> Bioenterprenuer	Exhibition (09:10 - 17:00)
11:20 - 11:50	Break				
11:50 - 12:40	PL4. Daniel A. Haber (Tamna Hall)				
12:40 - 13:30	Young Investigator's Session	Research Ethics Sym. (Korean)	MERCK 350 Future Researcher Award Lectures	KSMCB General Assembly	Poster Posting II (09:10 - 17:00)
13:30 - 15:20	Break & Poster Viewing				
15:20 - 17:30	<b>Sym. 17</b> Mitochondria and Human Diseases	<b>Sym. 18</b> Forces in Cell Biology	<b>Sym. 19</b> R&D Preparedness for Infectious Diseases and International and National Cooperation	<b>Sym. 20</b> Translational Medicine for Immunity & Inflammation-based Therapeutics	*Poster Presentation II (13:30 - 15:20)
17:30 - 18:20	KSMCB Life Science Award Lecture / M&C Award (Tamna Hall)				
18:20 - 19:00	Closing Remarks / Excellent Poster Awards / YI Research Awards				